



Whitepaper: Palm POS™

January 20, 2010

Simplifying Your Palm POS Configurations

THE PINNACLE CORPORATION

POS Manager™

Jennifer Trafelet, Retail Solutions Analyst

Pinnacle has your key to simplifying configurations of Palm POS systems by utilizing a user-friendly, intelligent graphical interface.

Pinnacle offers a point of sale system that was designed for the convenience store industry offering a touch screen interface and the flexibility to work within any infrastructure. While being reliable and providing the ability to handle the demand of day-to-day processes in the convenience store industry, Palm POS® also provides security that complies with PCI requirements.

It is important to be able to understand your point of sale system in order to provide benefit for your stores and to be able to take full advantage of its capabilities. When it comes to setting up or maintaining a point-of-sale system, there are so many configurations to think about. You have stores, registers, buttons, boards and hardware devices, plus updating each register at each store including users, security levels and much more. This can be very overwhelming and complex.

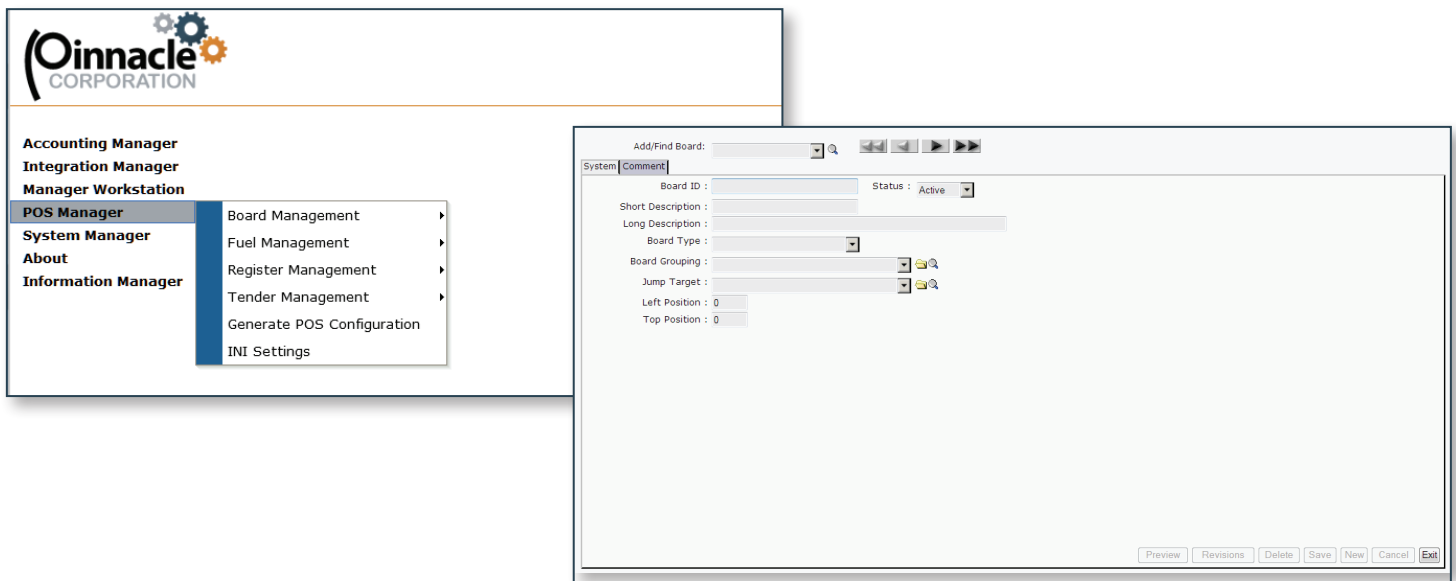
Pinnacle has your key to simplifying configurations of Palm POS systems by utilizing a user-friendly, intelligent graphical interface. POS Manager™ is a browser-based enterprise level solution on the Pinnacle Business Platform designed to remotely update store level point-of-sale configuration files.

POS Manager's implementation includes the System Manager module for company level organizational structure, store setup and user security.

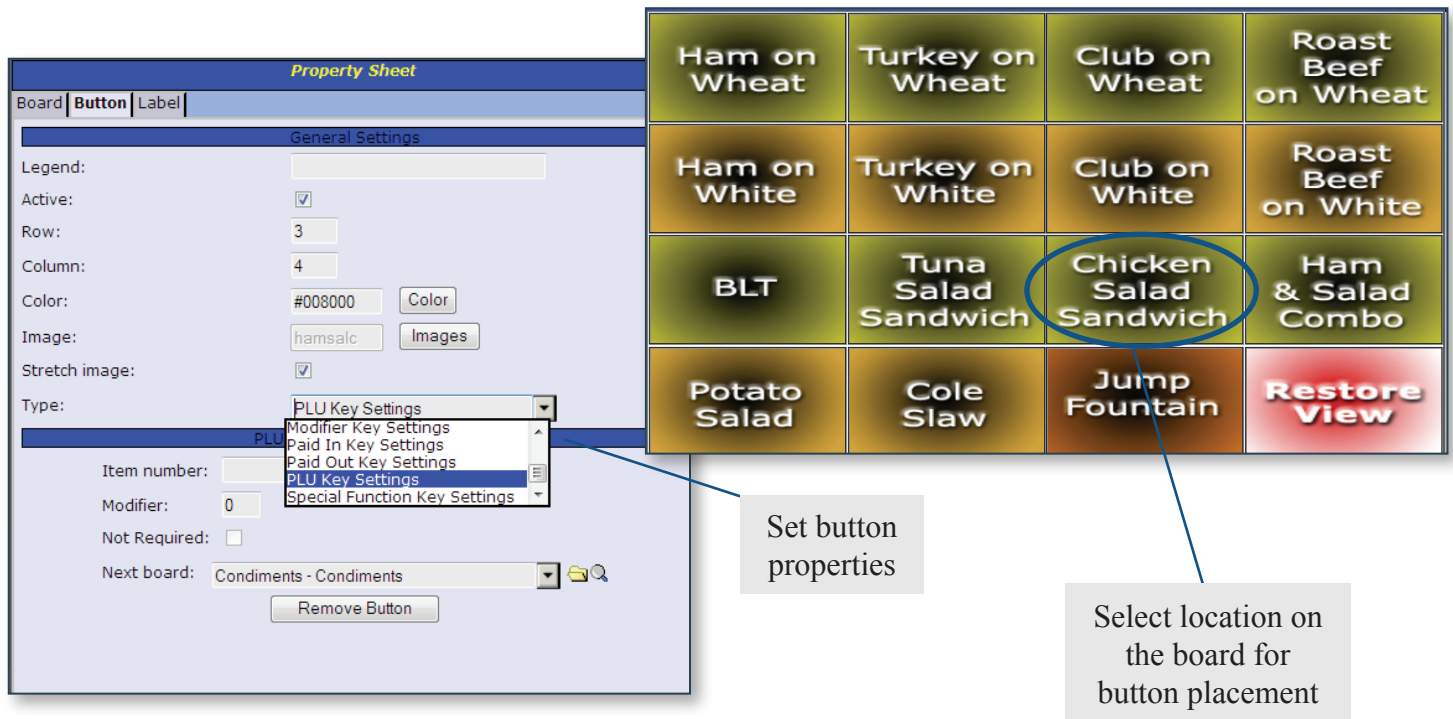
POS Manager can end configuration complexity to save you time and money.

- With a browser-based solution, you can setup or make updates to your stores and registers from anywhere as long as there is a browser and an internet connection.

- User friendly graphical interface provides simplicity while eliminating the need to view multiple tables or try to remember complex relationships between items.



- Create buttons and boards in a fraction of the time.



- Eliminate the need to refer to a technical document when setting up ini files. The graphical interface provides easier to understand text as well as Field Level Help.

Prompts: 1 | 2 |

Add Remove

Id * 1
Request Code * DRV
Description * Driver Number
Required ☒
Min Length 1
Max Length 6
Pinpad Type * Dukot
Display Type * Digits
Prompt Type * Numeric

Profile: **Store** Effective on: **01/08/2010** ☐ Show/Hide Setting Name
Current Section: **System**

Description	Value	Action	Default
PLU font size		Override	(0)
Allow multiple washes		Override	(false)
Whether or not to allow multiple car washes to be rung up at the same time. Default : false			
Allow overlapping shifts		Override	(true)
Allow department overrides		Override	(true)
Automatically add items		Override	(false)
Sign out timer		Override	(0)
Background .BMP filename		Override	(None)
Backup journals after transactions		Override	(false)

- Most configurations can be previewed prior to being distributed to stores or store groups.
- Managing of individual configuration files for each store point-of-sale system becomes a thing of the past.
- Ability to copy revisions eliminates to need to create duplicate setups.
- Distributions of configurations are automatically sent to each store location to the appropriate point-of-sale and at the designated time.

Revisions For : **Deli - Deli**

System

Effective Date	End Date	Comment
<input checked="" type="checkbox"/> 10/10/2007		

Copy From: **Deli - Deli**
Long Description: Deli Sandwiches

Effective Date	Comment
10/10/2007	

Accounting Manager
Integration Manager
Manager Workstation

POS Manager
System Manager
About
Information Manager

Board Management

- Fuel Management
- Register Management
- Tender Management
- Generate POS Configuration
- INI Settings

Manage Board

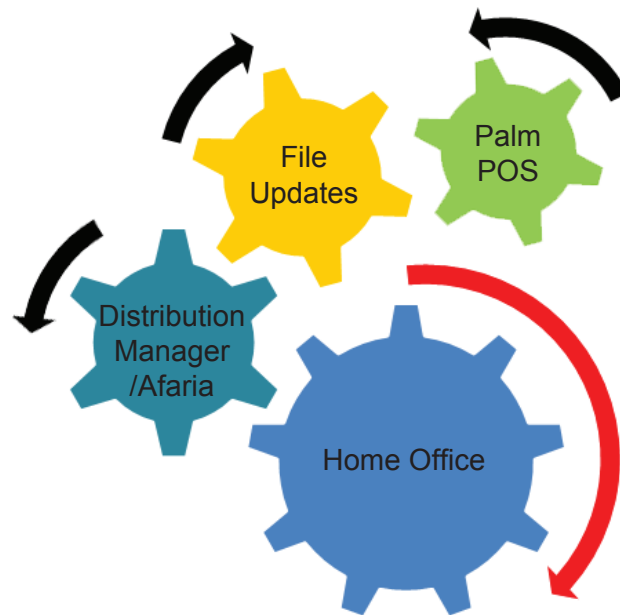
- Manage Board Grouping
- Manage Board Set
- Manage Jump Target
- Register Types

Copy To Board:

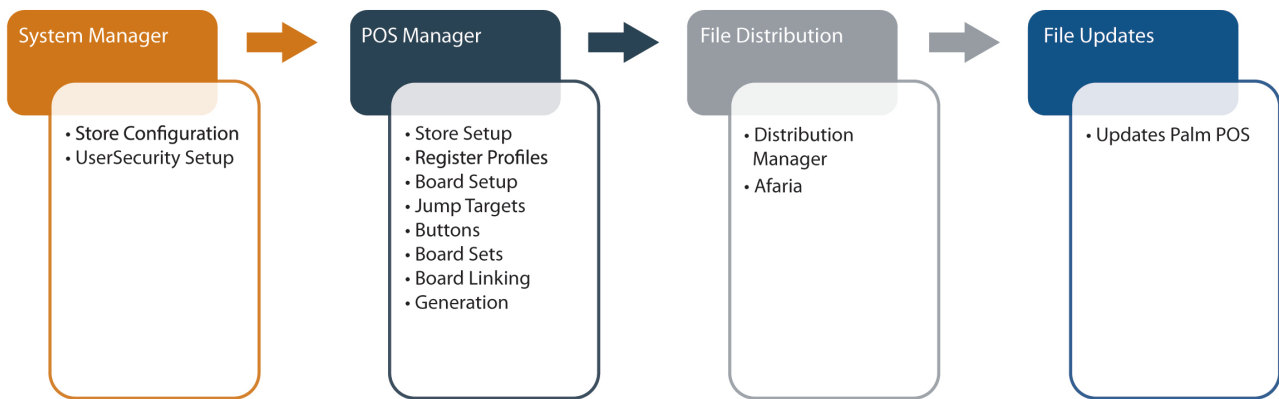
Confirm Overwrite:

- Car Wash - Car Wash
- Cashier Functions - Cashier Functions
- Condiments - Condiments
- Drinks and Food - Drinks and Food
- Man Gas - Man Gas

Exit Save



- Receive immediate feedback on the status of each configuration.
- Simple process from start to finish



Setting up and maintaining a single convenience store may not seem like much of a task. As your convenience store chain grows, so does the setup and maintenance of your point of sale systems. You have made a great choice by choosing Palm POS and now is the time to free yourself from hours of maintenance and compliment your Palm POS with POS Manager.